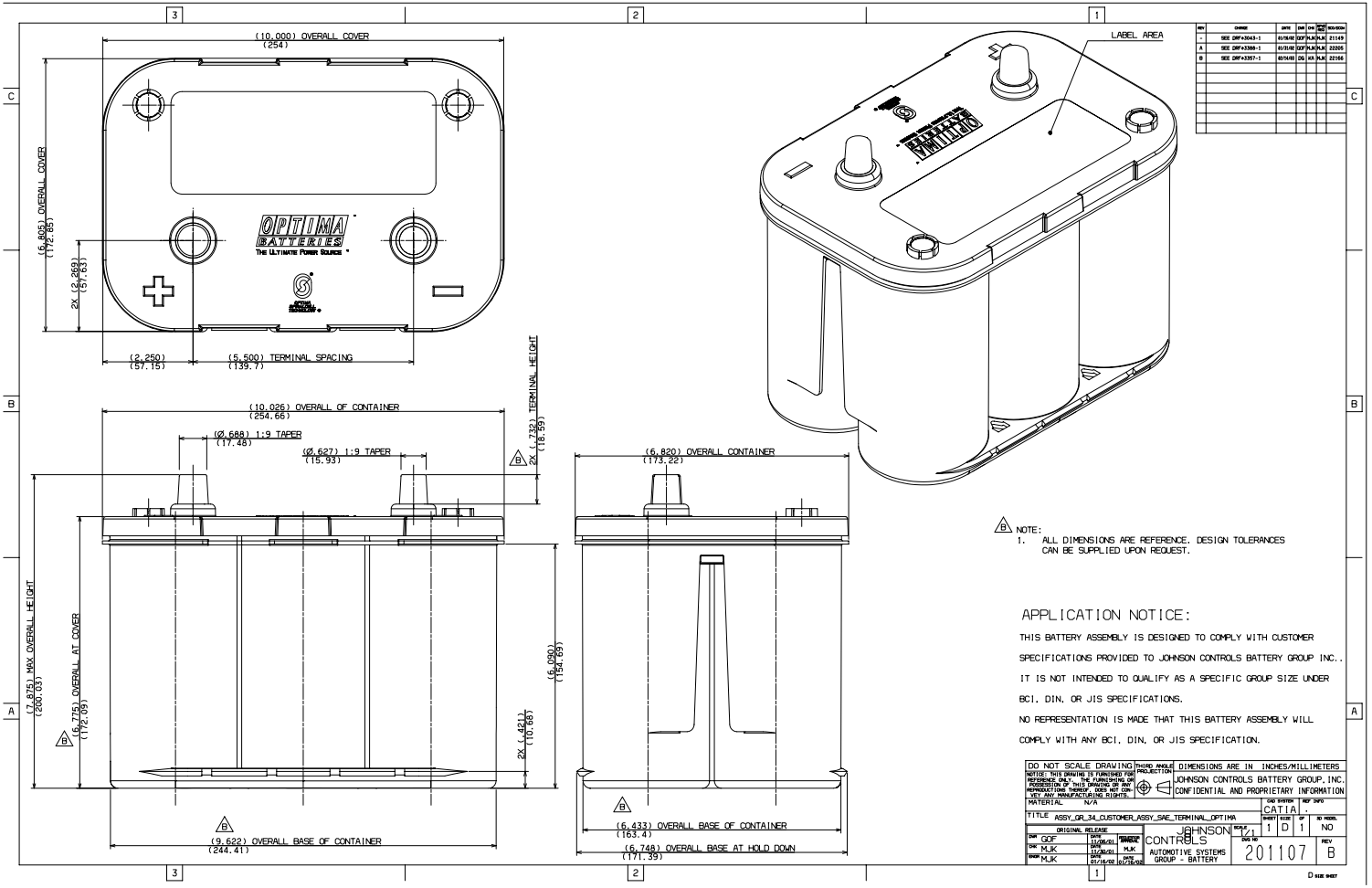


GENERAL FRM 1 MARCH 9, 2003 11:17:09



REV	DATE	BY	CHK	APP	DESCRIPTION
1	03/09/03	MLK	MLK		ISSUE FOR PRODUCTION
2	03/10/03	MLK	MLK		ISSUE FOR PRODUCTION
3	03/10/03	MLK	MLK		ISSUE FOR PRODUCTION
4	03/10/03	MLK	MLK		ISSUE FOR PRODUCTION
5	03/10/03	MLK	MLK		ISSUE FOR PRODUCTION
6	03/10/03	MLK	MLK		ISSUE FOR PRODUCTION
7	03/10/03	MLK	MLK		ISSUE FOR PRODUCTION
8	03/10/03	MLK	MLK		ISSUE FOR PRODUCTION
9	03/10/03	MLK	MLK		ISSUE FOR PRODUCTION
10	03/10/03	MLK	MLK		ISSUE FOR PRODUCTION

NOTE:  
1. ALL DIMENSIONS ARE REFERENCE. DESIGN TOLERANCES CAN BE SUPPLIED UPON REQUEST.

APPLICATION NOTICE:  
THIS BATTERY ASSEMBLY IS DESIGNED TO COMPLY WITH CUSTOMER SPECIFICATIONS PROVIDED TO JOHNSON CONTROLS BATTERY GROUP, INC.. IT IS NOT INTENDED TO QUALIFY AS A SPECIFIC GROUP SIZE UNDER ECI, DIN, OR JIS SPECIFICATIONS. NO REPRESENTATION IS MADE THAT THIS BATTERY ASSEMBLY WILL COMPLY WITH ANY ECI, DIN, OR JIS SPECIFICATION.

DO NOT SCALE DRAWING. DIMENSIONS ARE IN INCHES/MILLIMETERS UNLESS OTHERWISE SPECIFIED. THIS DRAWING IS FOR PRODUCTION USE ONLY. JOHNSON CONTROLS BATTERY GROUP, INC. CONFIDENTIAL AND PROPRIETARY INFORMATION.

TITLE	ASSY_GRP_34_CUSTOMER_ASSY_SAE_TERMINAL_OPTIMA	NO. OF SHEETS	1	OF	1	NO. OF SHEETS	NO
DATE	03/09/03	REV	1	BY	MLK	CHK	MLK
APP	MLK	DATE	03/10/03	BY	MLK	CHK	MLK
GROUP	AUTOMOTIVE SYSTEMS GROUP - BATTERY	REV	201107	BY	MLK	CHK	MLK

D see next