



Printing a Mounting Template

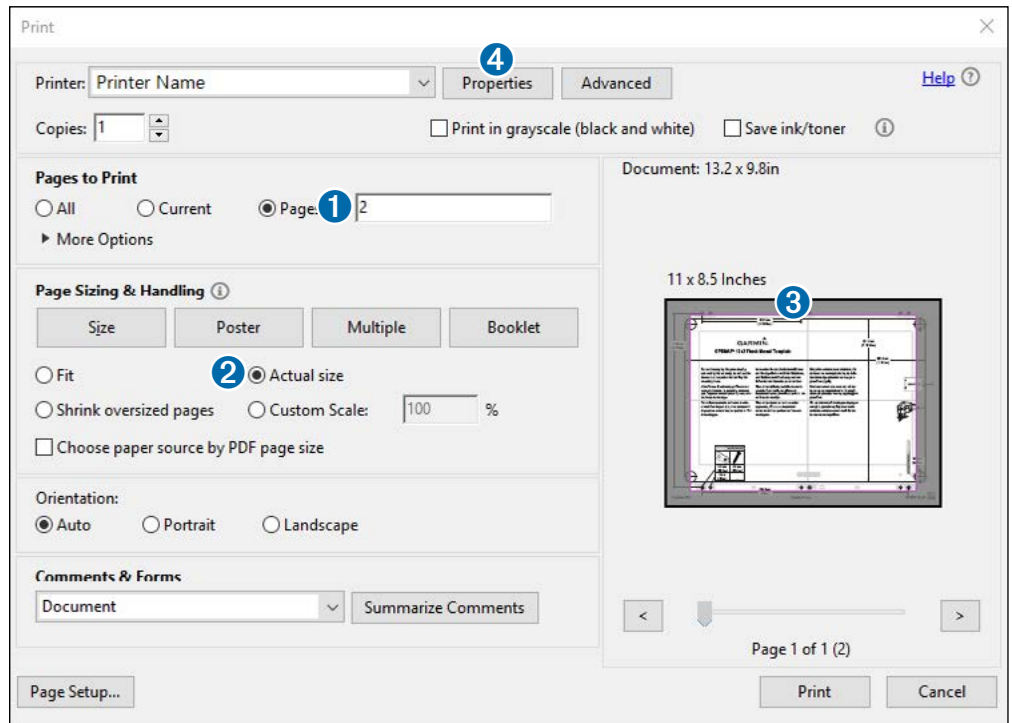
NOTICE

It is not recommended that you print a mounting template on your own. Use the template that came in the product box.

If you do print the template, you must follow these instructions for printing a mounting template precisely. To print large templates, you need large enough paper and printer. Failure to have the correct sized paper and printer, or a failure to follow these instructions, may result in an incorrectly sized template and therefore an incorrect cutout (too large or too small) on the mounting surface of your boat.

NOTE: The options and locations of the options differ between Adobe Acrobat versions and other PDF viewing/printing applications. Be sure the scaling is 100% before printing

- 1 Select **File > Print**.
- 2 Enter **2** in **Pages to Print** ①.
- 3 Select **Actual Size** ② for **Page Sizing & Handling**.
- 4 Verify that the paper size is larger than the template ③.
In this example, the paper is not larger than the template.
- 5 If the paper size is not large enough, select **Properties** ④ and select a **Paper Size** that is larger than the template.
- 6 After printing the template, use a ruler to measure at least one dimension line to ensure the template printed to 100% scale.



NOTICE

Garmin is not responsible for any damages or expenses resulting from a miscut mounting surface arising from a failure to follow these instructions.

